

VISION SCAN 250

CONTROL FEATURES

RDMX - Remote DMX Addressing
 USITT DMX-512 (16-bit resolution)
 14 DMX channels
 4 Digit L.E.D. Display
 On board menu settings
 3-pin XLR serial input/output
 Sound active mode

NEW

OPTICAL SYSTEM

High output luminous-parabolic dichroic reflector
 15° Beam Angle
 All lenses are anti-reflection coated

COLORS

8 dichroic filters, 7 Colors, UV + White
 Continuous, variable speed, color
 scrolling in both directions
 (rainbow effect)



More color combinations possible by overlaying
 the multi-color dichroic gobo and the colors on the color wheel

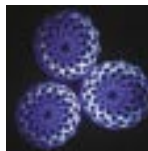
GOBOS

2 gobo wheels, 13 total gobos, 10 metal, 3 glass with Slot-Lock gobo
 replacement system
 6 interchangeable, indexable, rotating gobos plus open
 7 interchangeable, static gobos plus open
 26.9mm outside diameter, 23mm image diameter
 Gobo Overlay (Gobo Morphing)

SHUTTER/DIMMER

Variable speed strobe effect (1-10) Flashes per second
 Pre-set variable/random strobe and dimming pulse effect
 Dual Flag mechanical dimming system

3 FACET PRISM



PRISM

3 facet prism rotating in both directions at variable speeds
 Macro-function for rotating gobos/rotating prism combinations

FOCUS

Motor driven focus from near to far

LAMP

Phillips MSD 250/2 (250W, 8500°K, 3000 HRS)



PAN/TILT

Maximum PAN-movement 170°
 Maximum TILT-movement 85°
 Vector Mode with blackout

RIGGING

1 x Heavy Duty yoke
 1 x Safety cable hole

POWER SUPPLY

8A or 4A Fuse
 Magnetic Ballast
 Voltage: AC 98, 120, 208, 220, 230, 240V 50/60Hz
 Power Consumption 400W

DIMENSIONS & WEIGHT

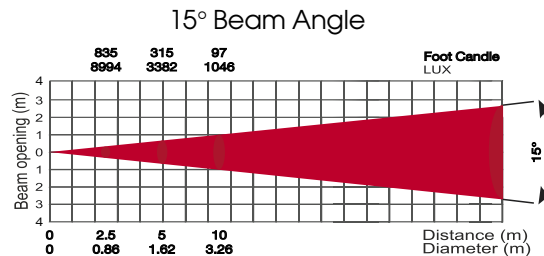
15"L x 14"W x 29.25"H
 48.5 lbs.



CARRYING HANDLE



RDMX
 REMOTE DMX ADDRESSING



GOBO WHEEL 1

Rotating Gobo Wheel



GOBO WHEEL 2

Convenient Slot-Lock gobo replacement system

