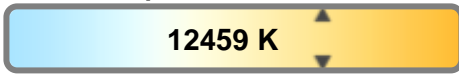


Color Temperature:



Total Lumen Output:
4083 lm

Light Quality:



Peak:
30708 cd

Light Efficiency:



Power: 195 W



CIE 1931
x: 0.282
y: 0.259

Test: Full On

Date: 10/10/2018

Voltage: 114 V

Current: 1.72 A

Frequency: 60 Hz

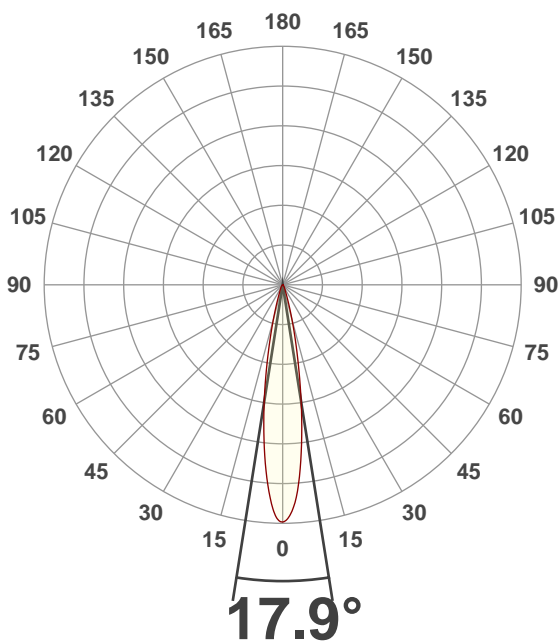
CRI: 76.3

CQS: 86.5

TM30: 76.6

Note:

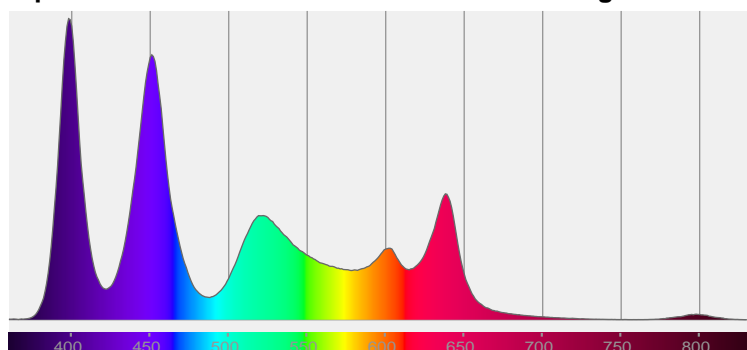
Beam Angle



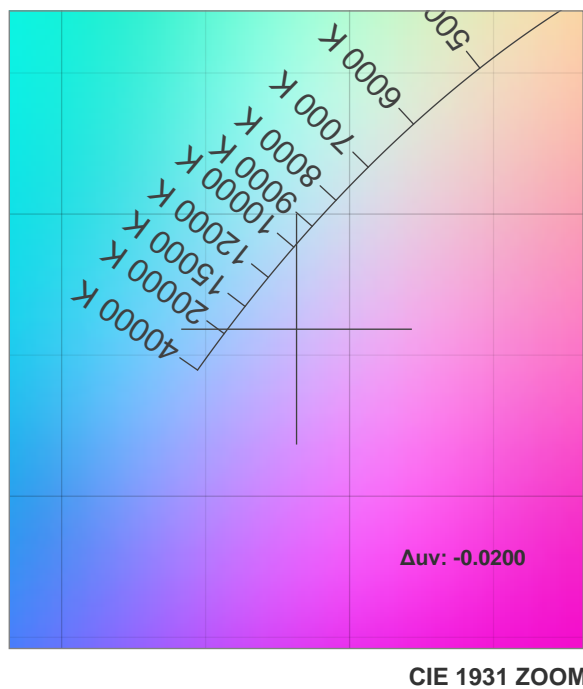
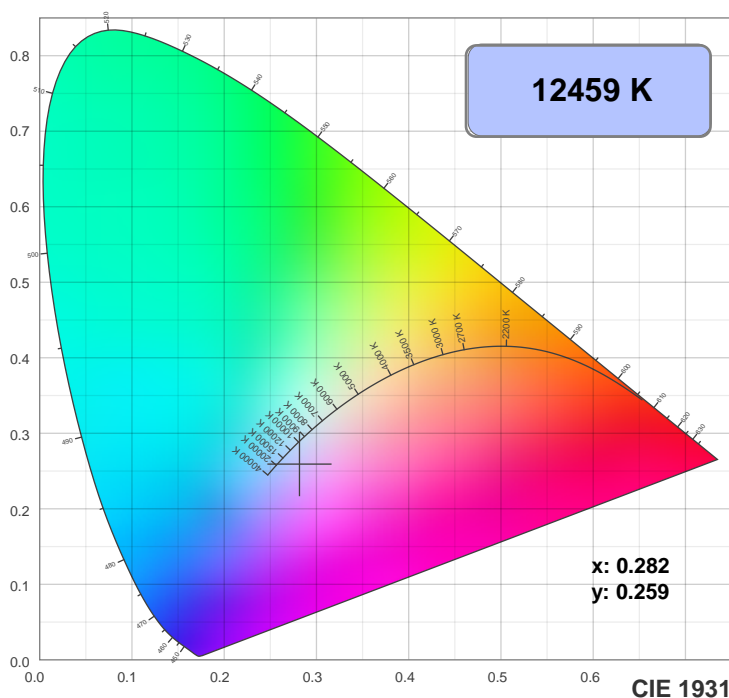
Beam Angle 50%	Field Angle 10%	Cutoff Angle 2.5%
17.9°	33.6°	49.7°

Spectra

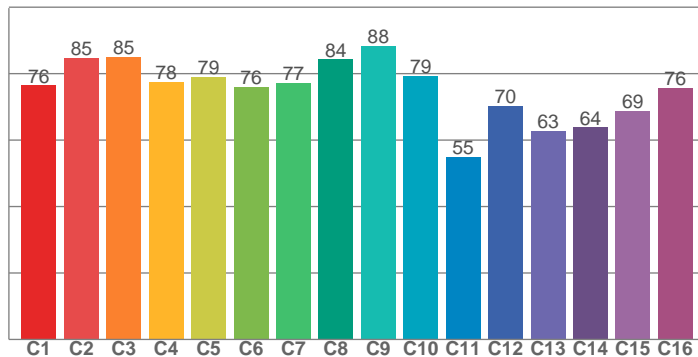
Dominant Wavelength: 429nm



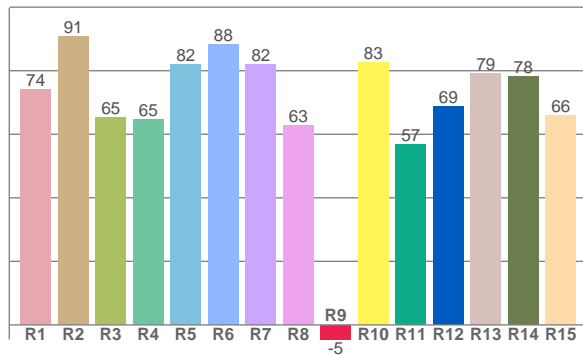
Color Details



TM30: 76.6



CRI: 76.3 (R1-R8)



CRI R values, only R1-R8 are used to calculate final CRI value

R1	R2	R3	R4	R5	R6	R7	R8	R9	R10	R11	R12	R13	R14	R15
74.2	90.9	65.3	64.6	81.9	88.3	82.0	62.8	-4.6	82.5	56.8	68.8	79.3	78.3	65.8

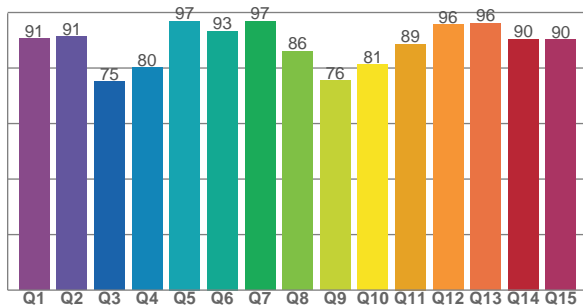
TM30 C Values, 16 binned values out of total of 99 C values

C1	C2	C3	C4	C5	C6	C7	C8	C9	C10	C11	C12	C13	C14	C15	C16
76.5	84.8	85.1	77.6	79.1	76.1	77.3	84.3	88.3	79.4	55.0	70.3	62.7	63.8	68.7	75.7

CQS Q Values

Q1	Q2	Q3	Q4	Q5	Q6	Q7	Q8	Q9	Q10	Q11	Q12	Q13	Q14	Q15
90.6	91.3	75.1	80.1	97.0	93.3	96.8	86.0	75.5	81.2	88.6	95.6	96.1	90.5	90.2

CQS: 86.5



Color Parameters

Color Temperature	Color Rendering Index	Red Component	Color Fidelity	Color Gamut	Color Quality Scale	Color Coordinate CIE 1931	Color Coordinate CIE 1931	Color Coordinate	Color Coordinate	Color Deviation from Black Body
CCT	CRI	CRI R9	TM30 Rf	TM30 Rg	CQS	x	y	u	v	Δuv
12459 K	76.3	-4.6	76.6	113.5	86.5	0.282	0.259	0.203	0.280	-0.0200

TM30 Details

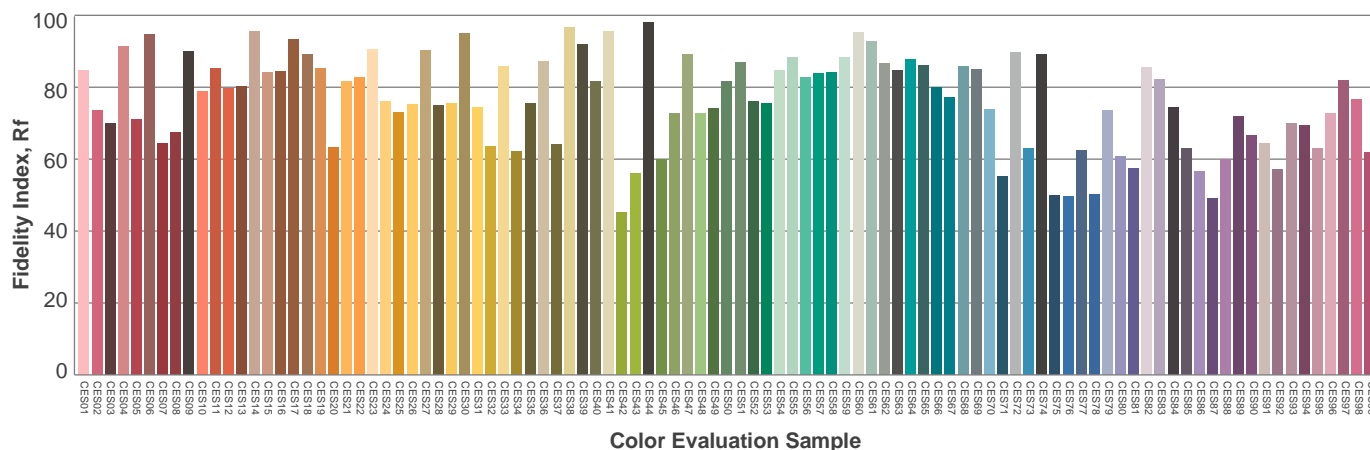
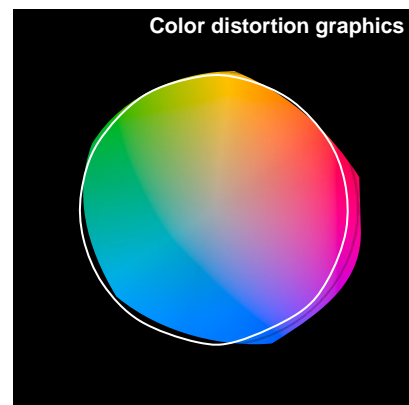
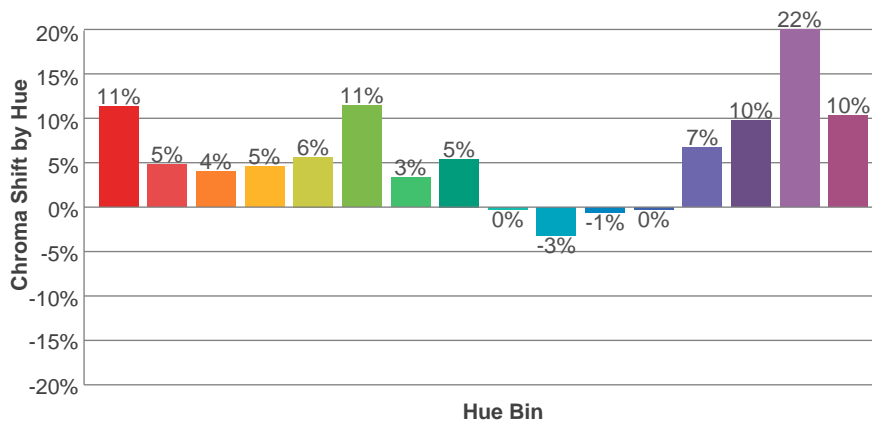
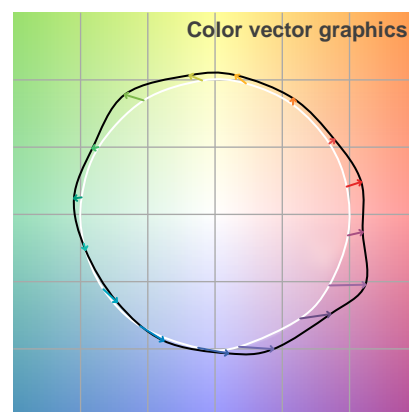
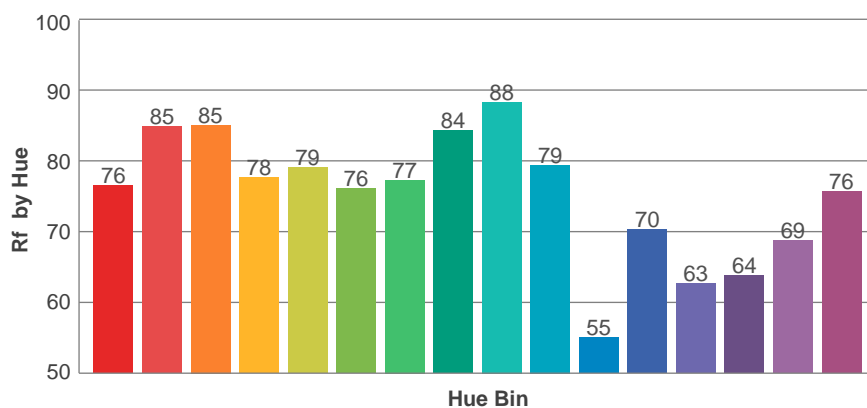
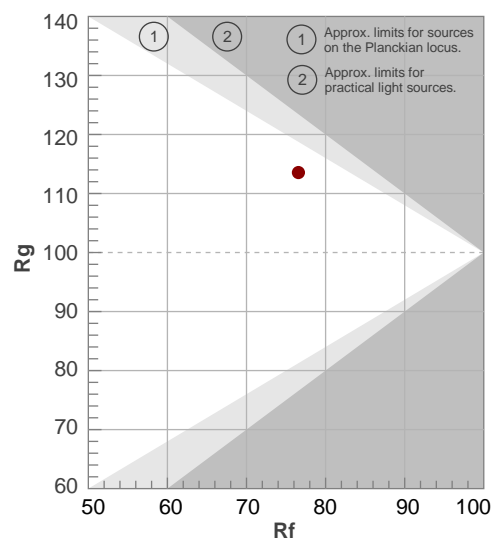
Rf 76.6

Fidelity Index Rf

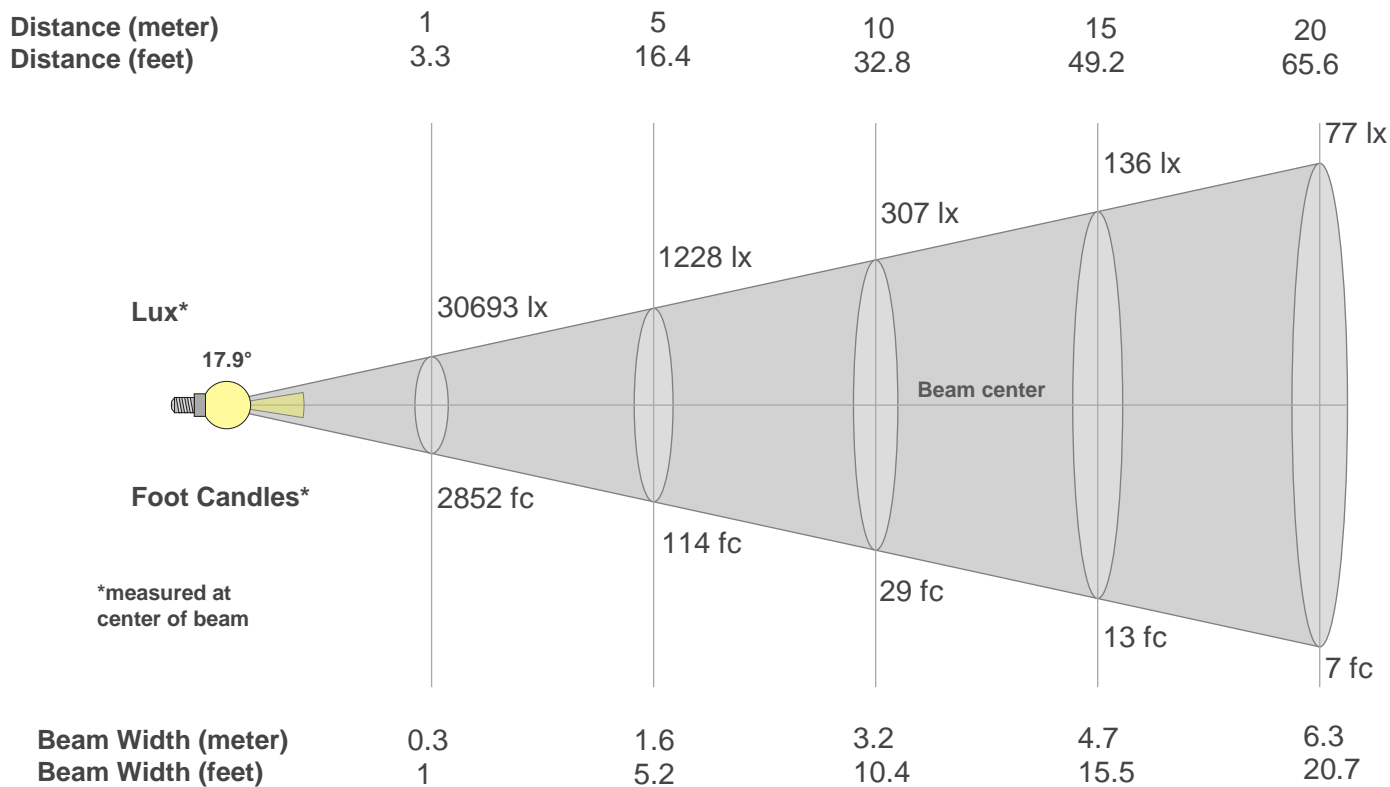
Rg 113.5

Gamut Index Rg

Hue Bin	R _f	Graphic shifts (%)	
		Chroma	Hue
1	76	11%	1%
2	85	5%	0%
3	85	4%	2%
4	78	5%	9%
5	79	6%	8%
6	76	11%	9%
7	77	3%	3%
8	84	5%	2%
9	88	0%	5%
10	79	-3%	13%
11	55	-1%	20%
12	70	0%	23%
13	63	7%	25%
14	64	10%	20%
15	69	22%	15%
16	76	10%	5%



Beam Details



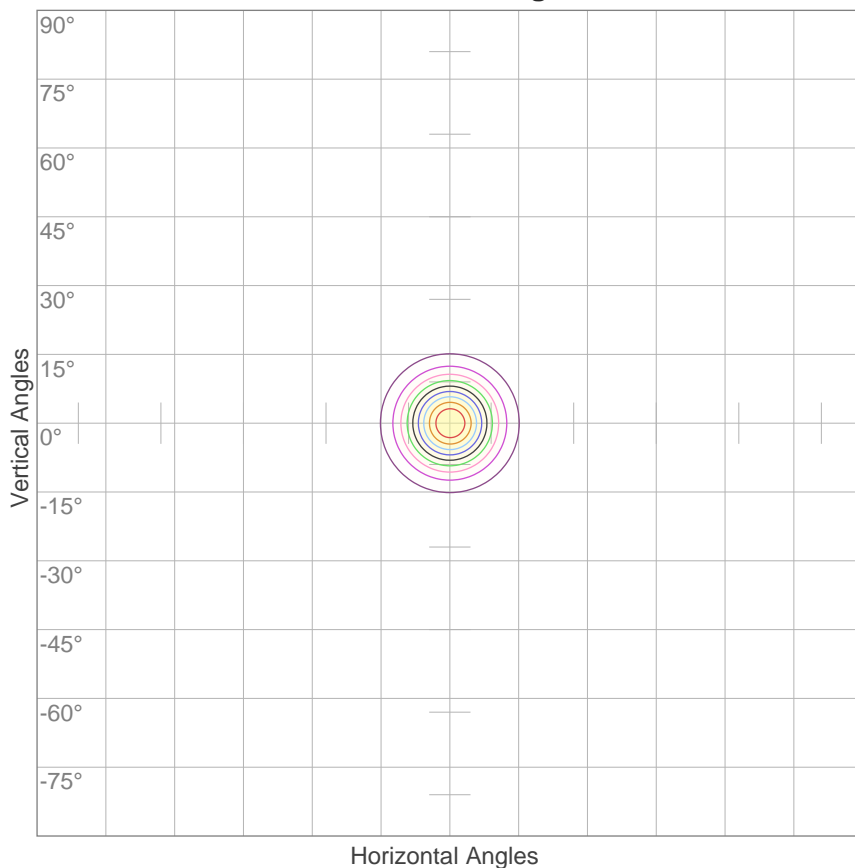
Beam Intensities from 1-20m

m	1	2	3	4	5	6	7	8	9	10	11	12	13	14	15	16	17	18	19	20
ft	3.3	6.6	9.8	13.1	16.4	19.7	23	26.2	29.5	32.8	36.1	39.4	42.7	45.9	49.2	52.5	55.8	59.1	62.3	65.6
lx	30693	7673	3410	1918	1228	853	626	480	379	307	254	213	182	157	136	120	106	95	85	77
fc	2851.5	712.9	316.8	178.2	114.1	79.2	58.2	44.6	35.2	28.5	23.6	19.8	16.9	14.5	12.7	11.1	9.9	8.8	7.9	7.1

Beam Angle 50%	Field Angle 10%	Cutoff Angle 2,5%	Intensity Ratio in 120° Cone	Intensity Ratio in 90° Cone
17.9°	33.6°	49.7°	99.9%	98.3%

ISO Diagrams

ISO Candela Diagram



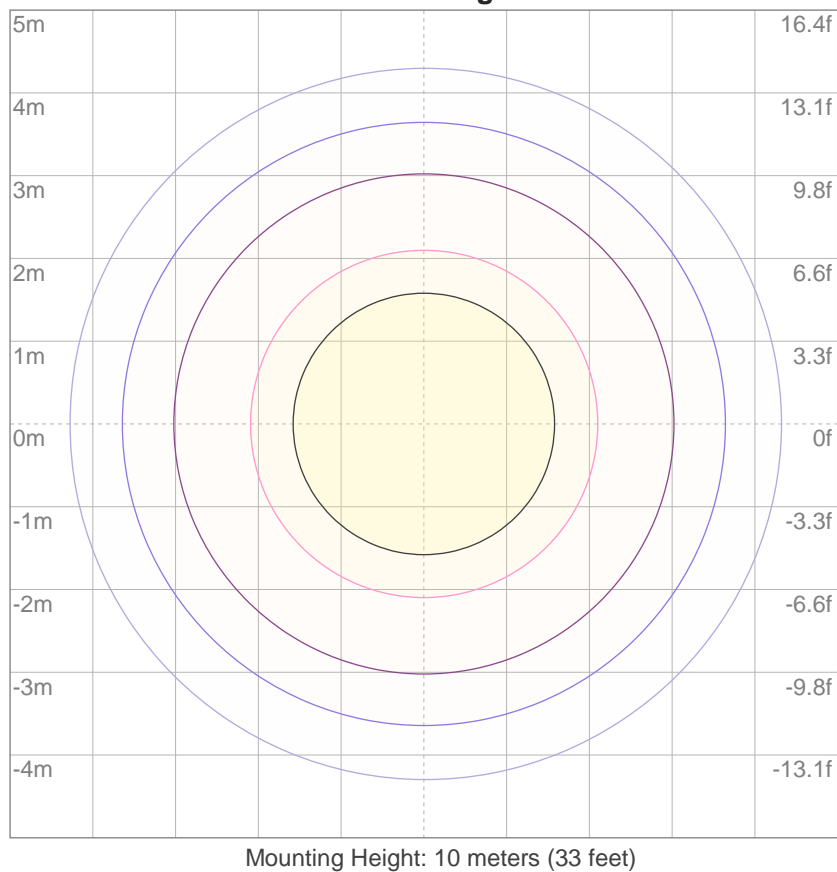
10%	3069 cd
20%	6139 cd
30%	9208 cd
40%	12277 cd
50%	15347 cd
60%	18416 cd
70%	21485 cd
80%	24555 cd
90%	27624 cd

Conditions:

Number of c-planes: 2

Candela at center: 30693 cd

ISO Lux Diagram



3%	9.21 lx
5%	15.3 lx
10%	30.7 lx
30%	92.1 lx
50%	153 lx

Conditions:

Number of c-planes: 2

Lux at center: 307 lx

*Lux distribution on a surface
when lamp is mounted at 10
meters from the surface.*